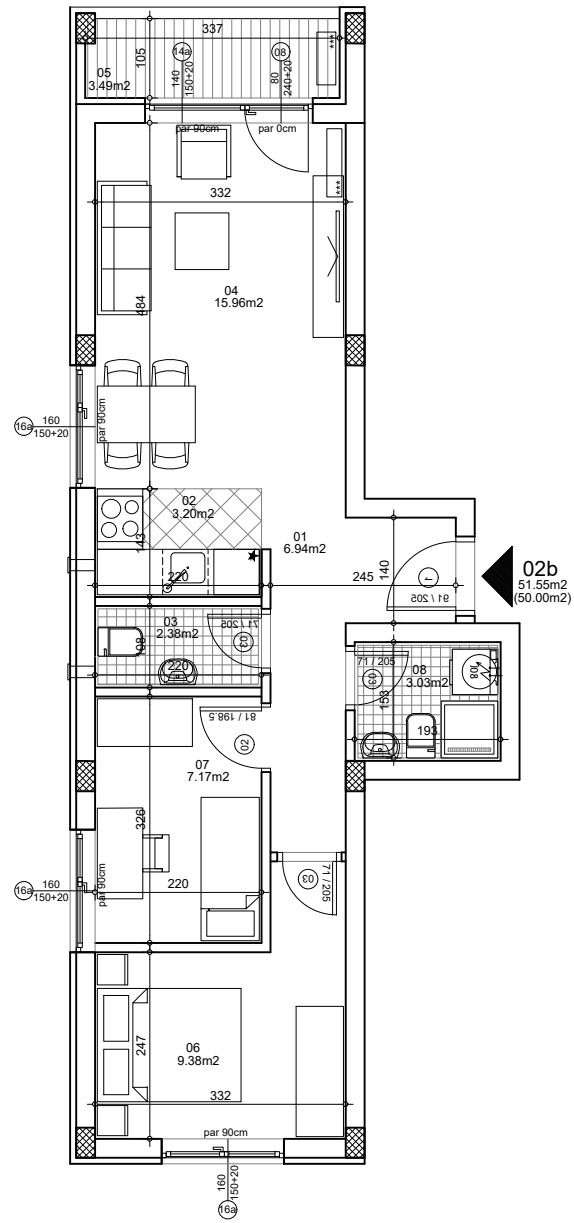




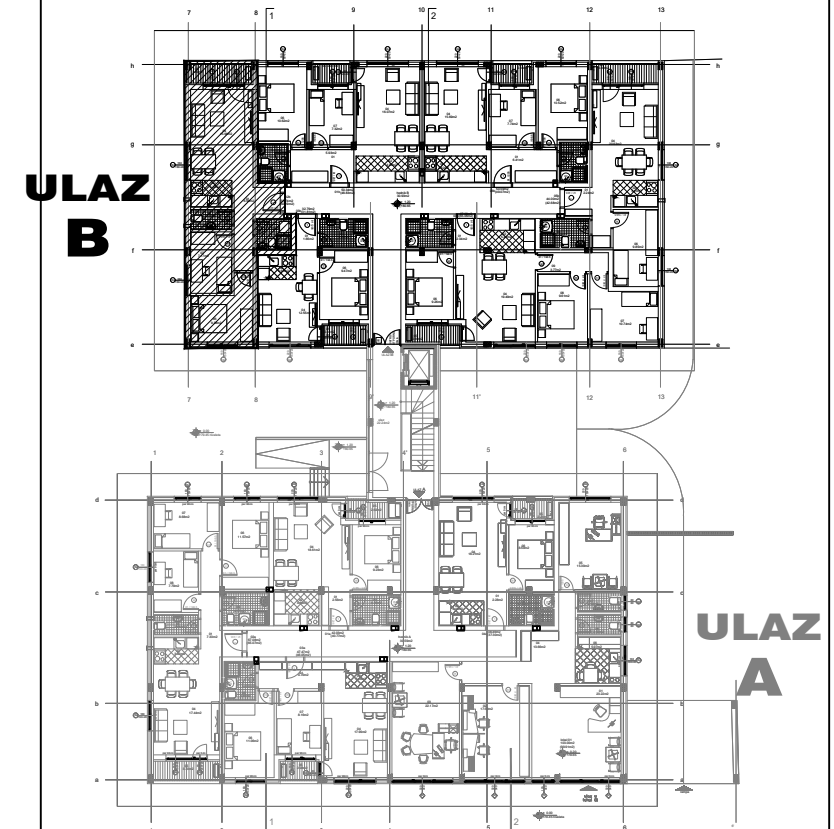
osnova stana
R = 1:100



STAN 2b TROSOBAN

1	ULAZNI HODNIK	6.94m ²
2	KUHINJA	3.20m ²
3	TOALET	2.38m ²
4	DNEVNA SOBA	15.96m ²
5	TERASA	3.49m ²
6	SPAVAĆA SOBA	9.38m ²
7	SPAVAĆA SOBA	7.17m ²
8	KUPATILO	3.03m ²
UKUPNO STAN 2b :		51.55m²
		- 3% (50.00m²)

OSNOVA PRIZEMLJA



ulica Ćirila i Metodija br.50-52-54

ULAZ B: PRIZEMLJE/STAN 2b