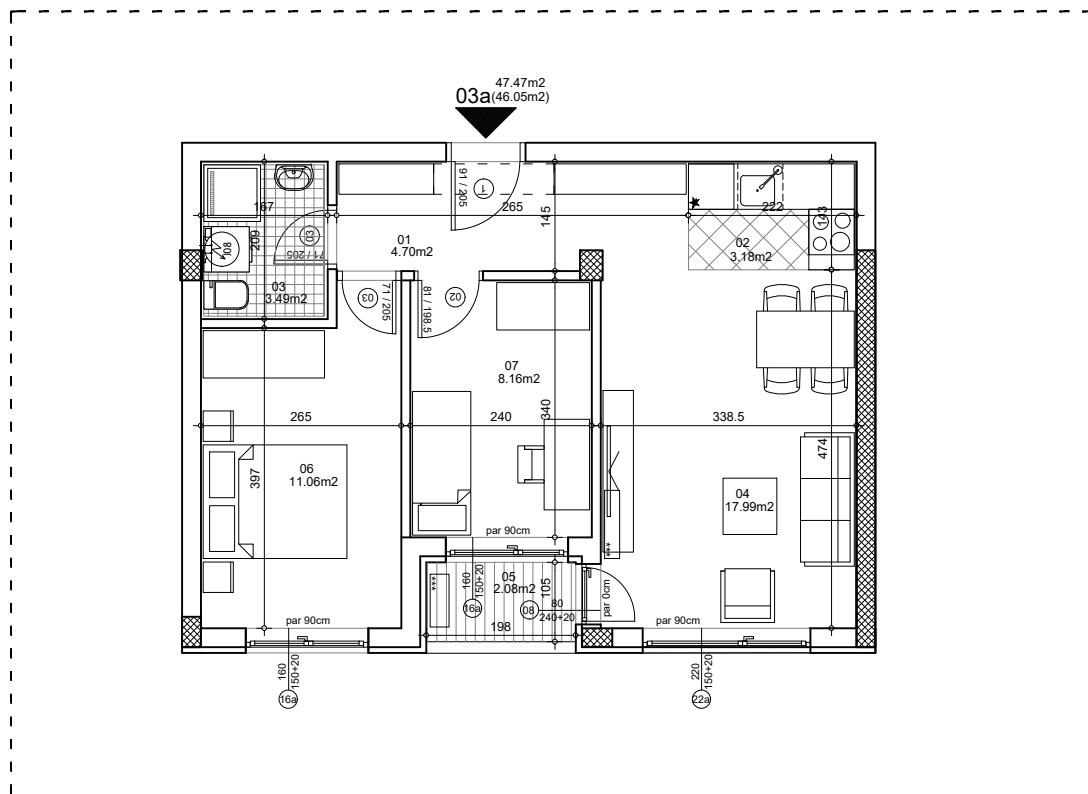




**osnova stana**  
**R = 1:100**

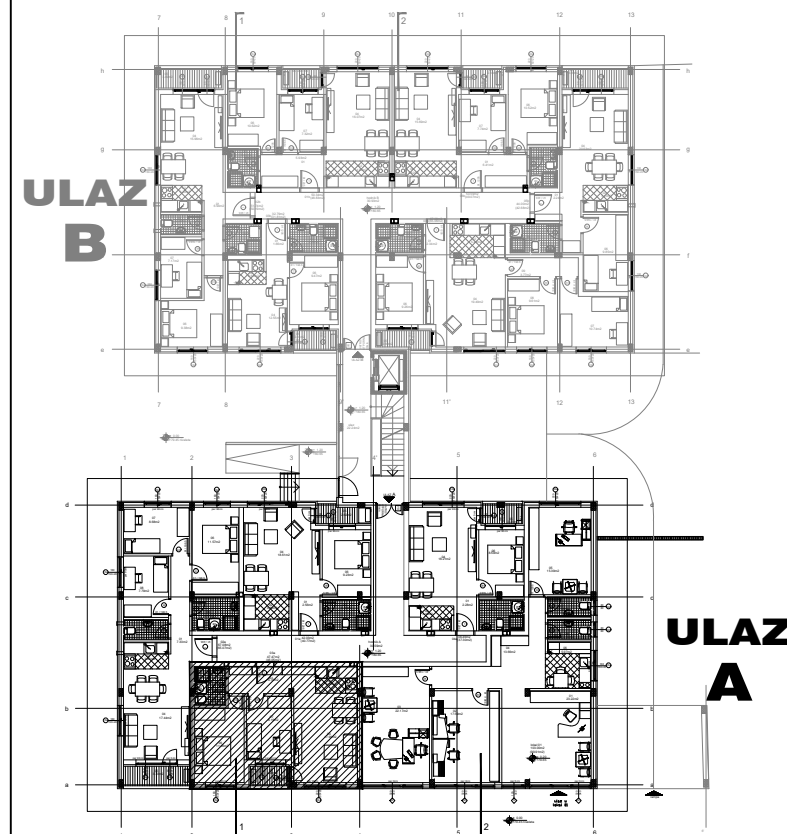


**STAN 3a TROSOBAN**

<b>1</b>	<b>ULAZNI HODNIK</b>	4.70m <sup>2</sup>
<b>2</b>	<b>KUHINJA</b>	3.18m <sup>2</sup>
<b>3</b>	<b>KUPATILO</b>	3.49m <sup>2</sup>
<b>4</b>	<b>DNEVNA SOBA</b>	17.99m <sup>2</sup>
<b>5</b>	<b>TERASA</b>	2.08m <sup>2</sup>
<b>6</b>	<b>SPAVAĆA SOBA</b>	11.06m <sup>2</sup>
<b>7</b>	<b>SPAVAĆA SOBA</b>	8.16m <sup>2</sup>
<b>UKUPNO STAN 3a :</b>		<b>47.47m<sup>2</sup></b>

**- 3% (46.05m<sup>2</sup>)**

**OSNOVA PRIZEMLJA**



**ulica Ćirila i Metodija br.50-52-54**

**ULAZ A: PRIZEMLJE/STAN 3a**