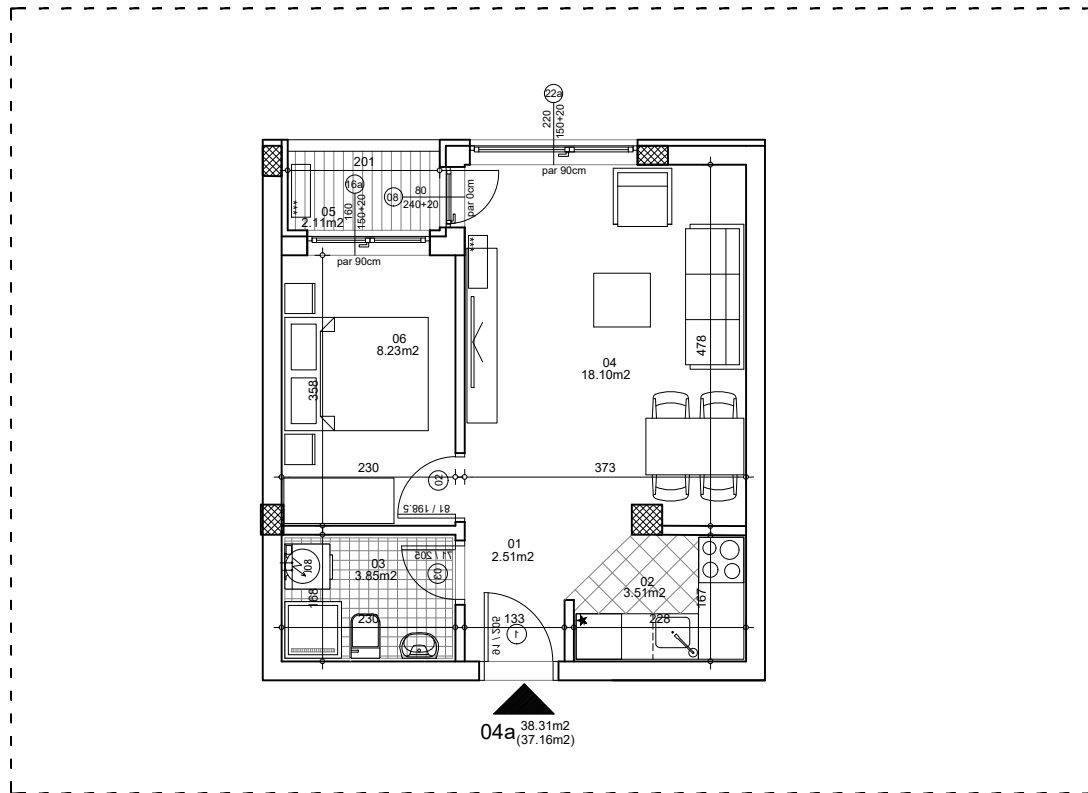




**osnova stana**  
**R = 1:100**

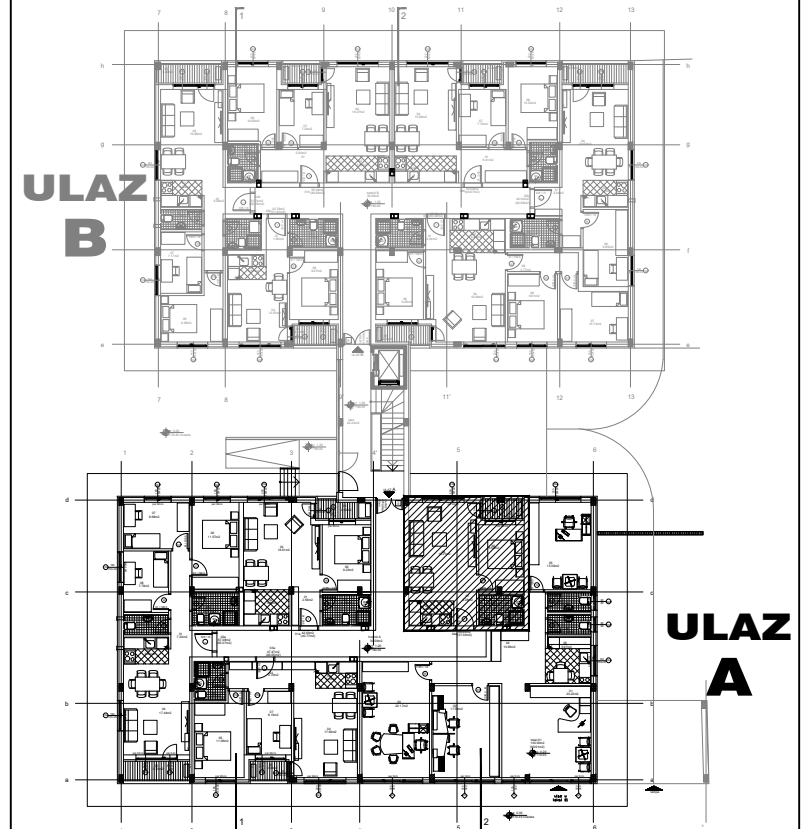


**ulica Ćirila i Metodija br.50-52-54**

**STAN 4a DVOSOBAN**

<b>1</b>	<b>ULAZNI HODNIK</b>	2.51m <sup>2</sup>
<b>2</b>	<b>KUHINJA</b>	3.51m <sup>2</sup>
<b>3</b>	<b>KUPATILO</b>	3.85m <sup>2</sup>
<b>4</b>	<b>DNEVNA SOBA</b>	18.10m <sup>2</sup>
<b>5</b>	<b>TERASA</b>	2.11m <sup>2</sup>
<b>6</b>	<b>SPAVAĆA SOBA</b>	8.23m <sup>2</sup>
<b>UKUPNO STAN 4a :</b>		<b>38.31m<sup>2</sup></b>
		<b>- 3% (37.16m<sup>2</sup>)</b>

**OSNOVA PRIZEMLJA**



**ULAZ A: PRIZEMLJE/STAN 4a**