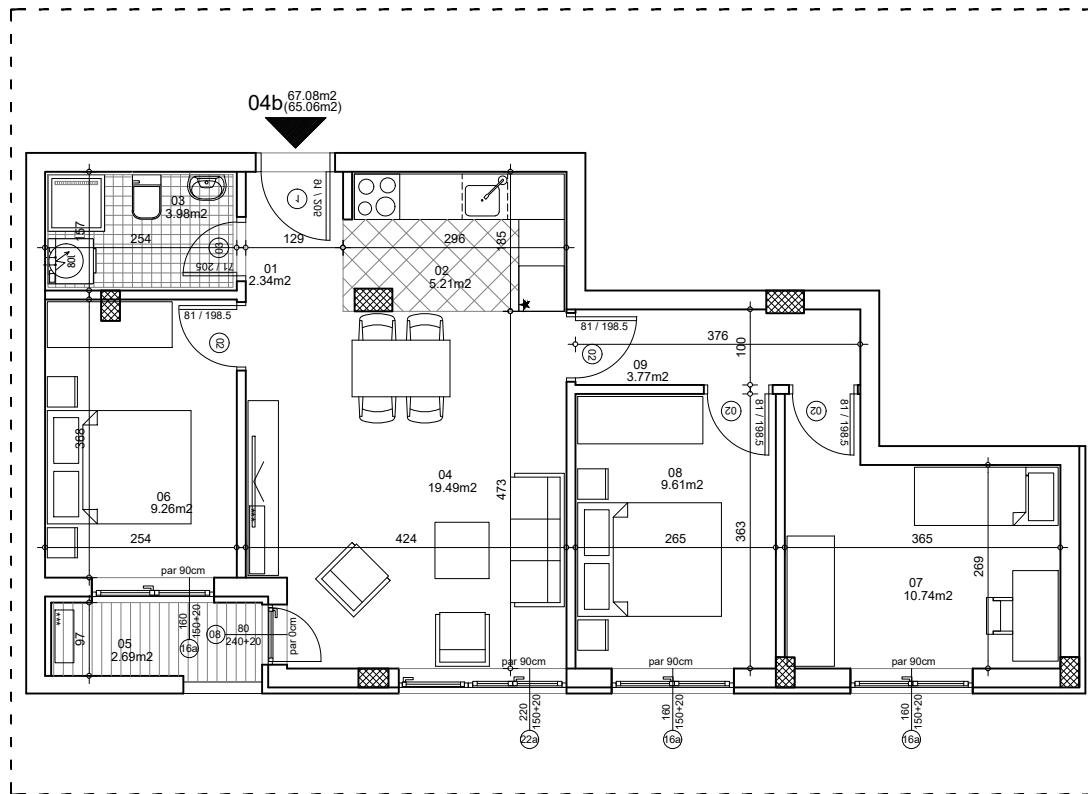




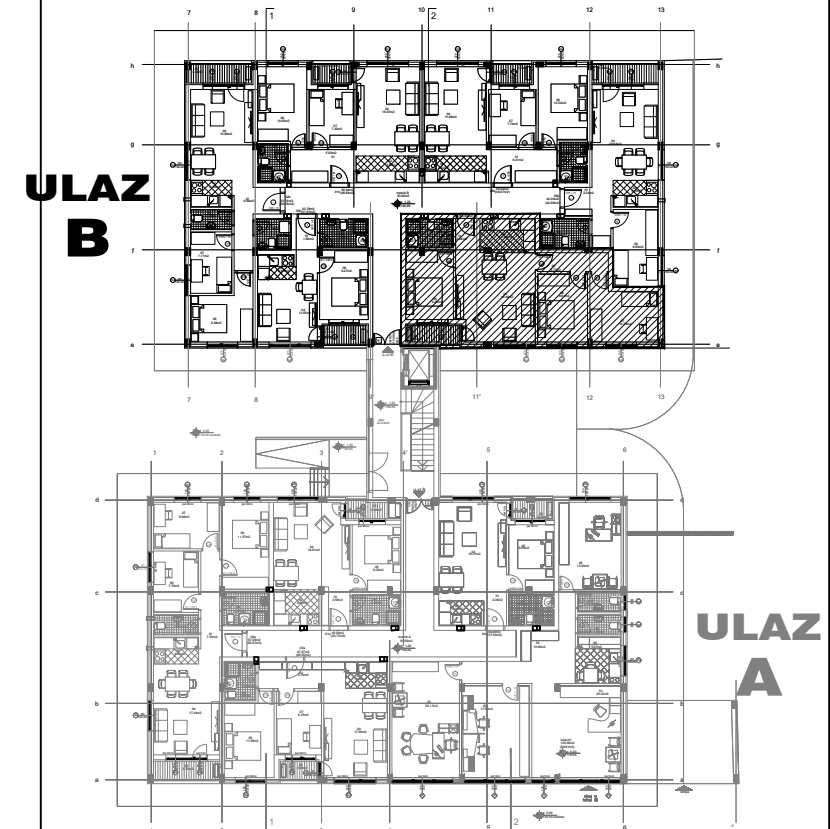
**osnova stana**  
**R = 1:100**



**STAN 2a ČETVOROSOBAN**

<b>1</b>	<b>ULAZNI HODNIK</b>	2.34m <sup>2</sup>
<b>2</b>	<b>KUHINJA</b>	5.21m <sup>2</sup>
<b>3</b>	<b>TOALET</b>	3.98m <sup>2</sup>
<b>4</b>	<b>DNEVNA SOBA</b>	19.49m <sup>2</sup>
<b>5</b>	<b>TERASA</b>	2.69m <sup>2</sup>
<b>6</b>	<b>SPAVAĆA SOBA</b>	9.26m <sup>2</sup>
<b>7</b>	<b>SPAVAĆA SOBA</b>	10.74m <sup>2</sup>
<b>8</b>	<b>SPAVAĆA SOBA</b>	9.61m <sup>2</sup>
<b>9</b>	<b>HODNIK</b>	3.77m <sup>2</sup>
		67.08m <sup>2</sup>
		<b>- 3% (65.06m<sup>2</sup>)</b>

**OSNOVA PRIZEMLJA**



**ulica Ćirila i Metodija br.50-52-54**

**ULAZ B: PRIZEMLJE/STAN 4b**