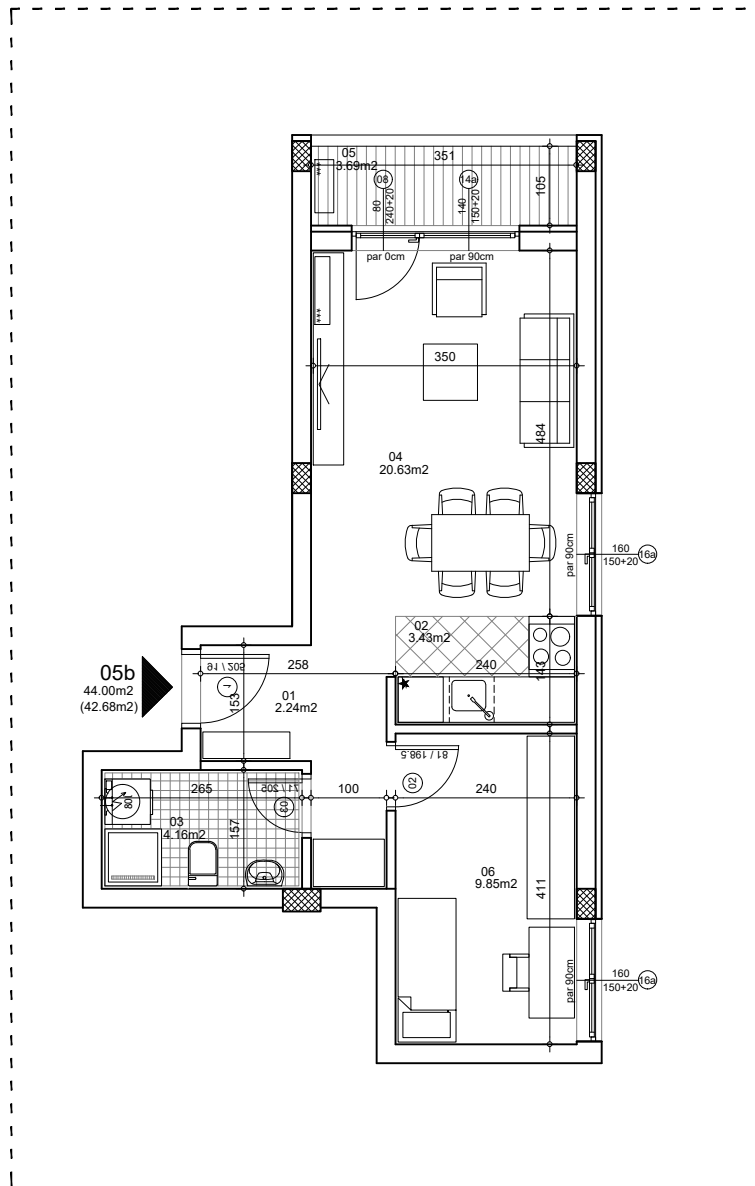




osnova stana
R = 1:100

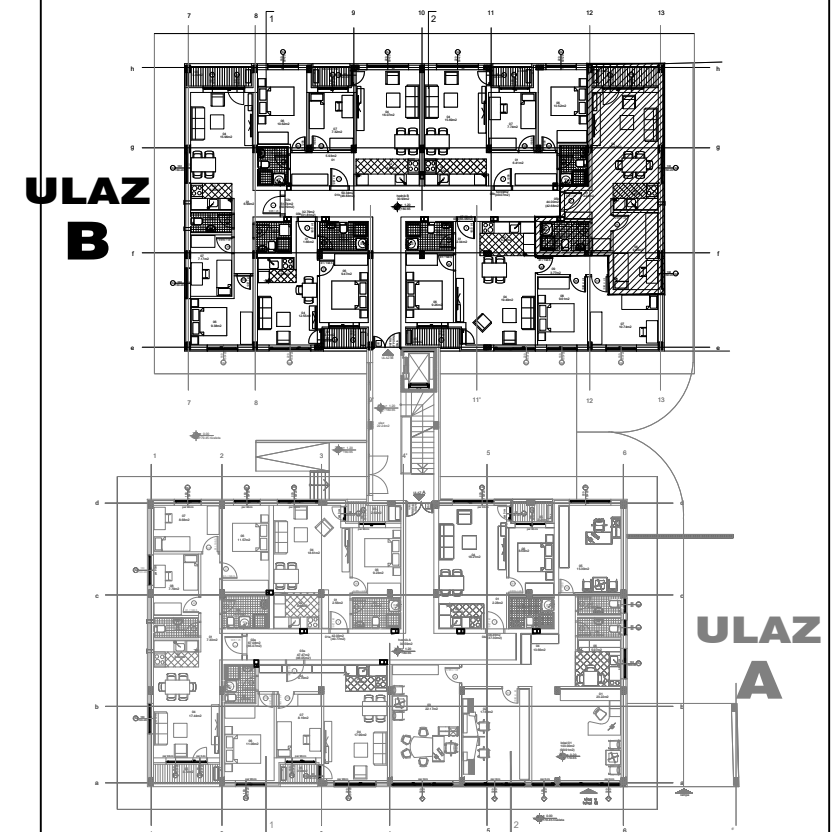


STAN 5b ČETVOROSOBAN

1	ULAZNI HODNIK	2.24m ²
2	KUHINJA	3.43m ²
3	TOALET	4.16m ²
4	DNEVNA SOBA	20.63m ²
5	TERASA	3.69m ²
6	SPAVAĆA SOBA	9.85m ²
		44.00m ²
		- 3% (42.68m ²)

UKUPNO STAN 5b :

OSNOVA PRIZEMLJA



ulica Ćirila i Metodija br.50-52-54

ULAZ A: PRIZEMLJE/STAN 5b