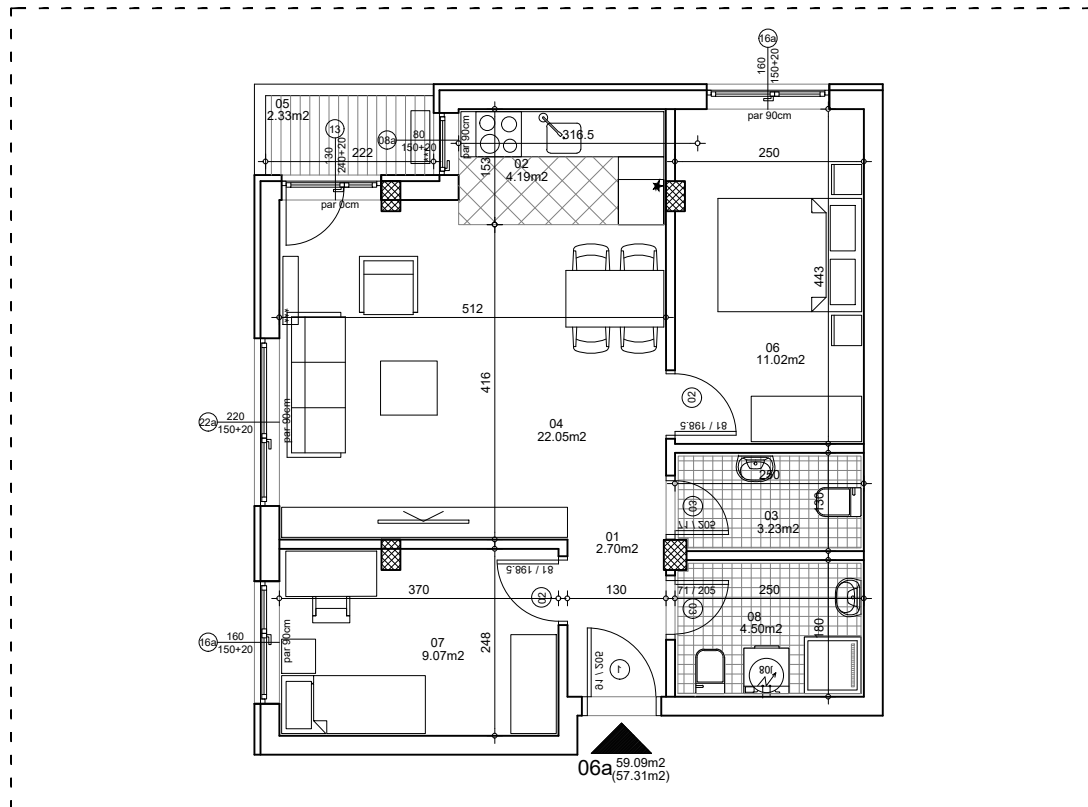




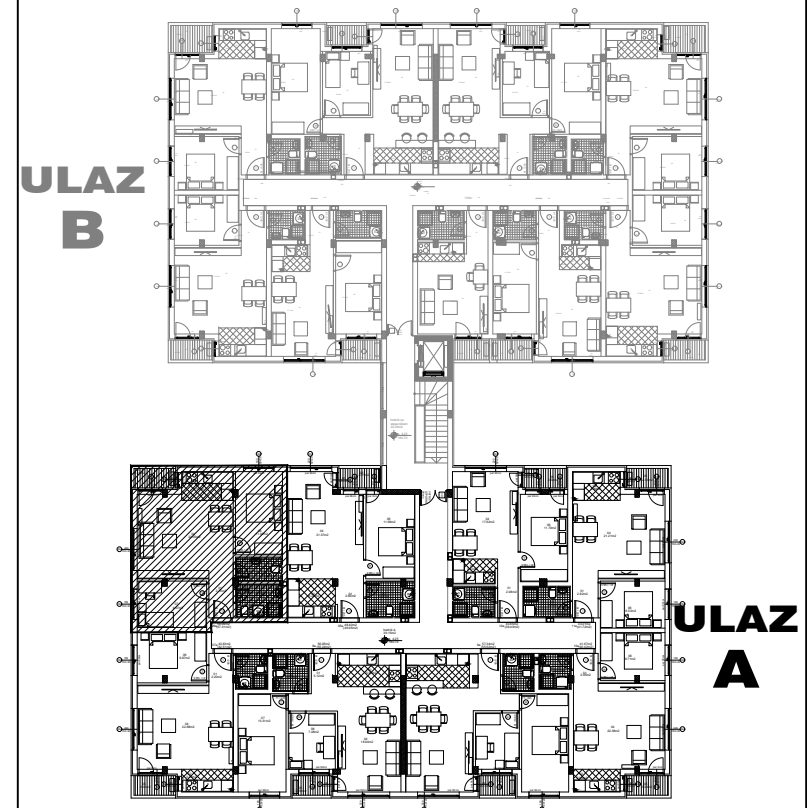
osnova stana
R = 1:100



STAN 6a TROSOBAN

1	ULAZNI HODNIK	2.70m ²
2	KUHINJA	4.19m ²
3	KUPATILO	3.23m ²
4	DNEVNA SOBA	22.05m ²
5	TERASA	2.33m ²
6	SPAVAĆA SOBA	11.02m ²
7	SPAVAĆA SOBA	9.07m ²
8	KUPATILO	4.50m ²
UKUPNO STAN 6a :		59.09m²
		- 3% (57.31m²)

OSNOVA I SPRATA



ulica Ćirila i Metodija br.50-52-54

ULAZ A: I SPRAT/STAN 6a