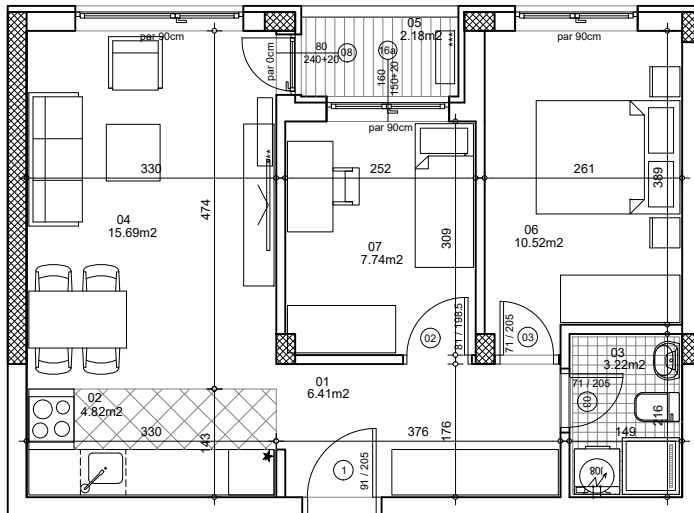




osnova stana
R = 1:100

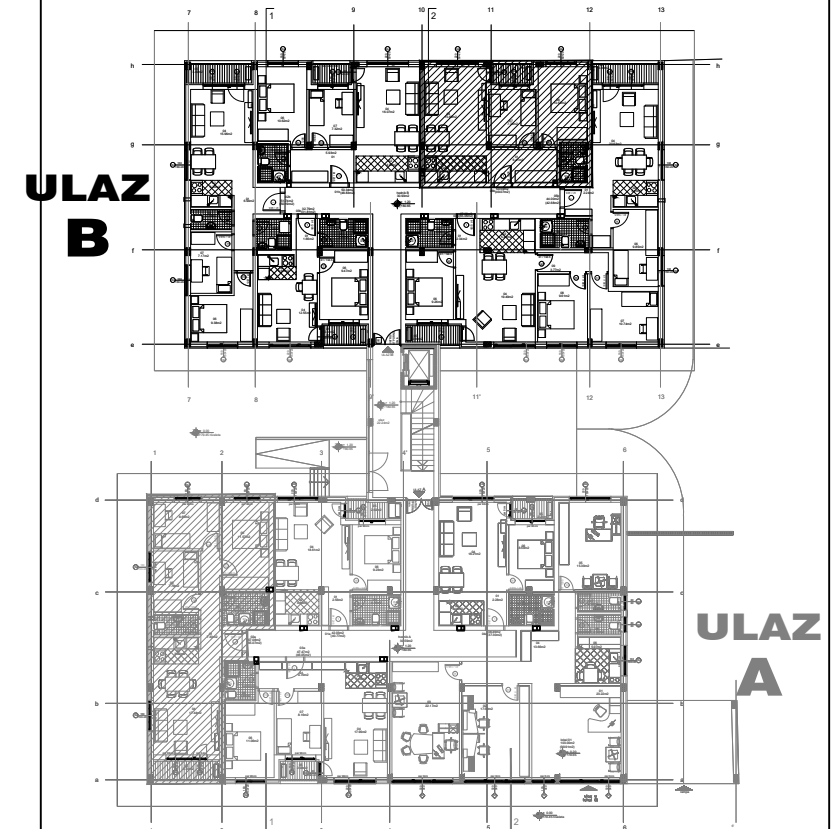


06b 50.59m²
(49.07m²)

STAN 6b TROSOBAN

| | | |
|-------------------------|---------------|----------------------------------|
| 1 | ULAZNI HODNIK | 6.41m ² |
| 2 | KUHINJA | 4.82m ² |
| 3 | KUPATILO | 3.22m ² |
| 4 | DNEVNA SOBA | 15.69m ² |
| 5 | TERASA | 2.18m ² |
| 6 | SPAVAĆA SOBA | 10.52m ² |
| 7 | SPAVAĆA SOBA | 7.74m ² |
| UKUPNO STAN 6b : | | 50.59m² |
| | | - 3% (49.07m²) |

OSNOVA PRIZEMLJA



ulica Ćirila i Metodija br.50-52-54

ULAZ B: PRIZEMLJE/STAN 6b