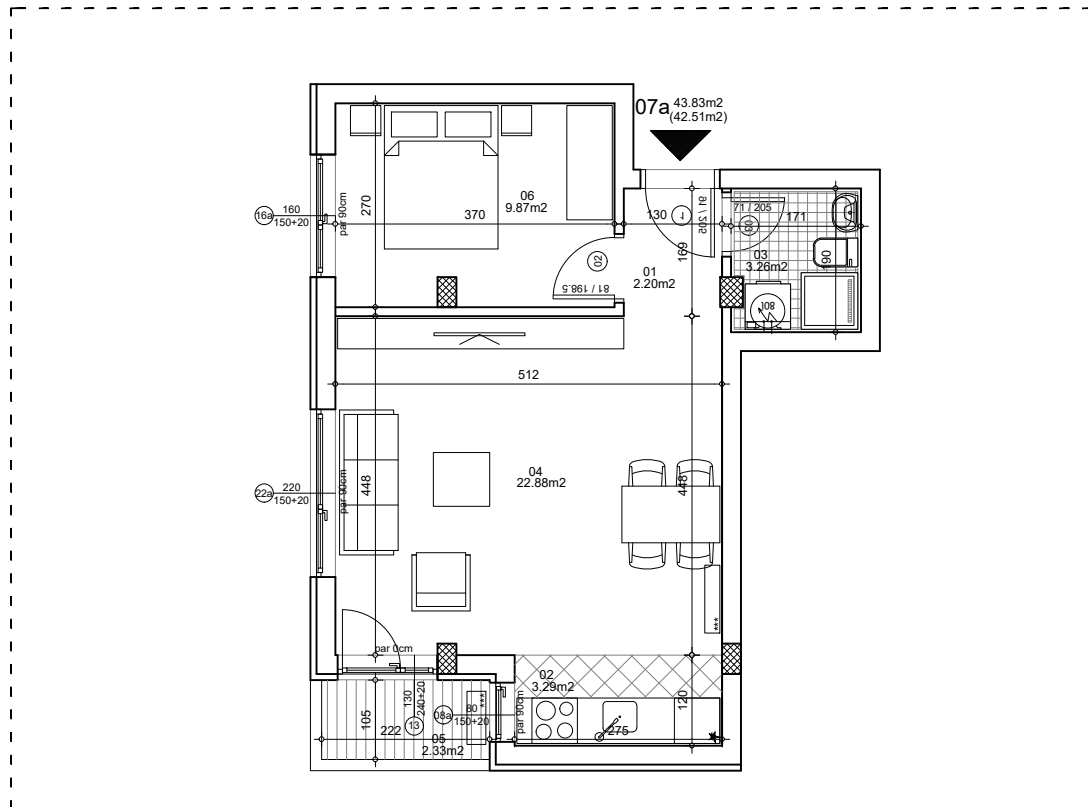




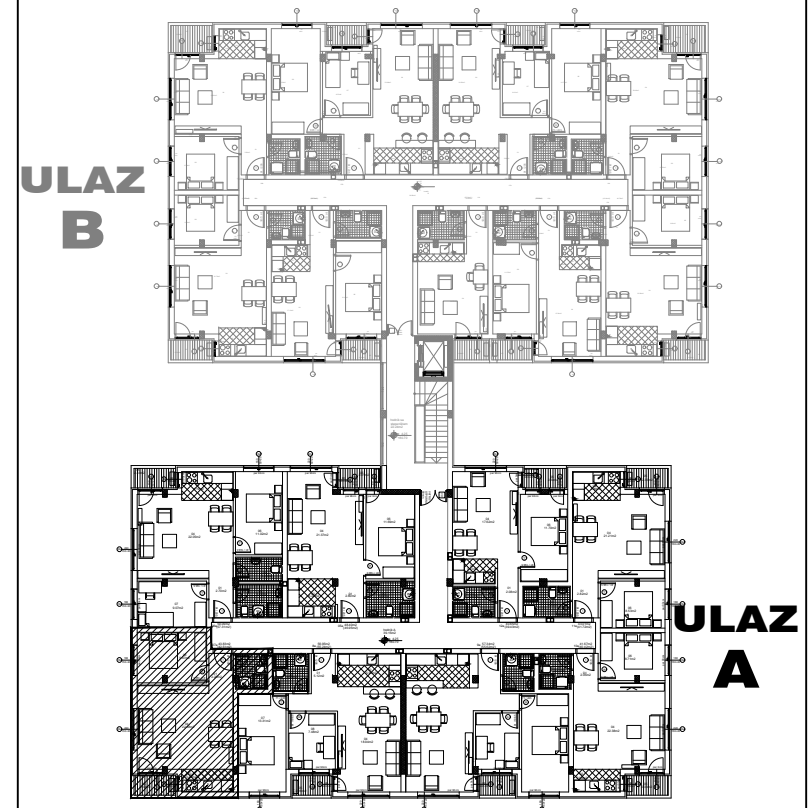
**osnova stana**  
**R = 1:100**



**STAN 7a DVOSOBAN**

<b>1</b>	<b>ULAZNI HODNIK</b>	2.20m <sup>2</sup>
<b>2</b>	<b>KUHINJA</b>	3.29m <sup>2</sup>
<b>3</b>	<b>KUPATILO</b>	3.26m <sup>2</sup>
<b>4</b>	<b>DNEVNA SOBA</b>	22.88m <sup>2</sup>
<b>5</b>	<b>TERASA</b>	2.33m <sup>2</sup>
<b>6</b>	<b>SPAVAĆA SOBA</b>	9.87m <sup>2</sup>
<b>UKUPNO STAN 7a :</b>		43.83m <sup>2</sup>
		<b>- 3% (42.51m<sup>2</sup>)</b>

**OSNOVA I SPRATA**



**ulica Ćirila i Metodija br.50-52-54**

**ULAZ A: I SPRAT/STAN 7a**