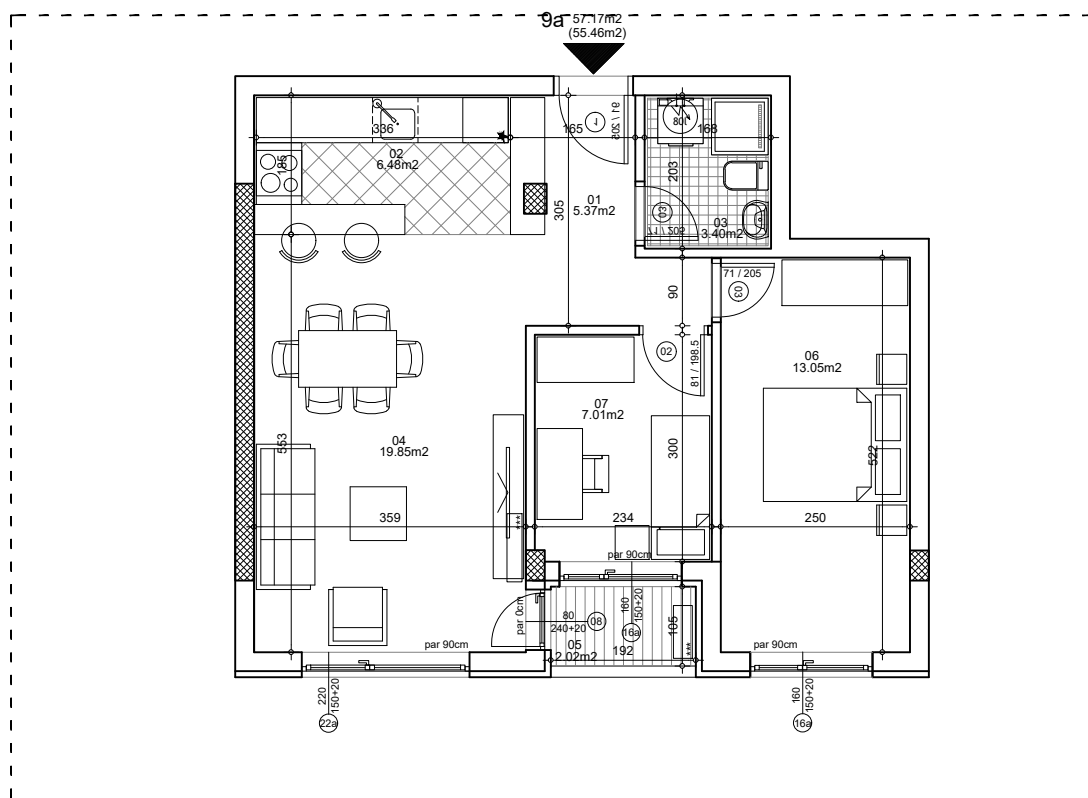




**osnova stana**  
**R = 1:100**



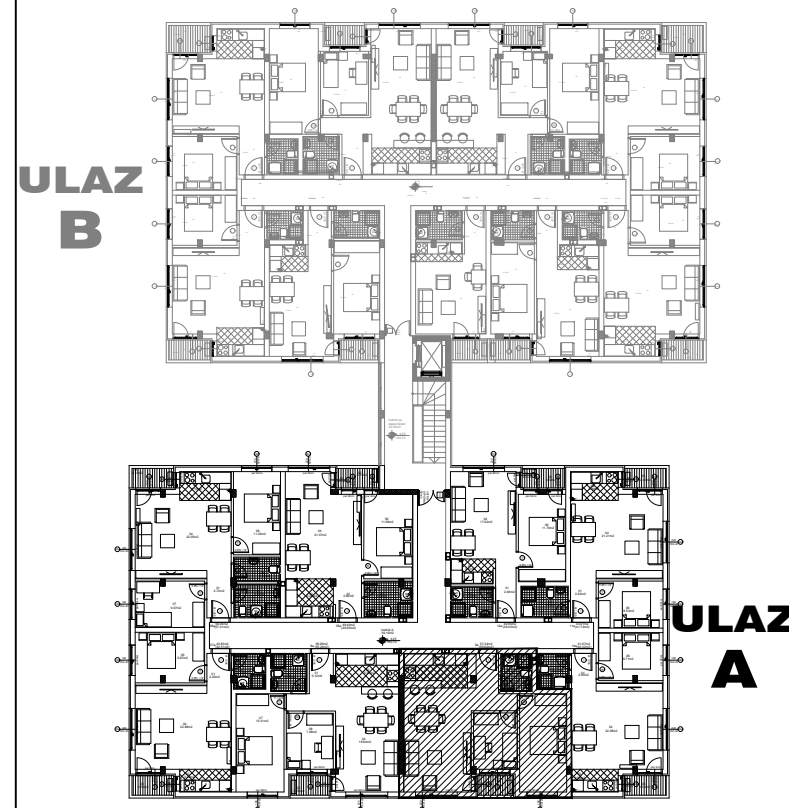
**ulica Ćirila i Metodija br.50-52-54**

**STAN 9a TROSOBAN**

<b>1</b>	<b>ULAZNI HODNIK</b>	5.37m <sup>2</sup>
<b>2</b>	<b>KUHINJA</b>	6.48m <sup>2</sup>
<b>3</b>	<b>KUPATILO</b>	3.40m <sup>2</sup>
<b>4</b>	<b>DNEVNA SOBA</b>	19.85m <sup>2</sup>
<b>5</b>	<b>TERASA</b>	2.02m <sup>2</sup>
<b>6</b>	<b>SPAVAĆA SOBA</b>	13.05m <sup>2</sup>
<b>7</b>	<b>SPAVAĆA SOBA</b>	7.01m <sup>2</sup>

**UKUPNO STAN 9a :** 57.17m<sup>2</sup>  
**- 3% (55.46m<sup>2</sup>)**

**OSNOVA I SPRATA**



**ULAZ A: I SPRAT/STAN 9a**