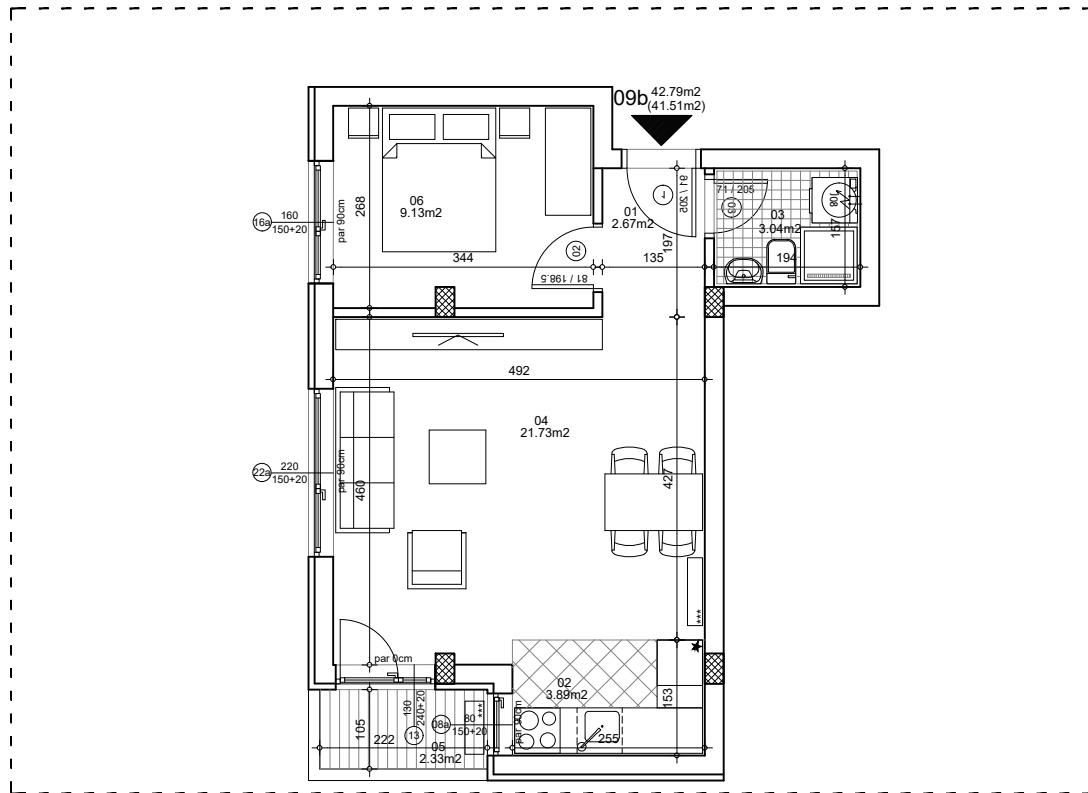




**osnova stana**  
**R = 1:100**

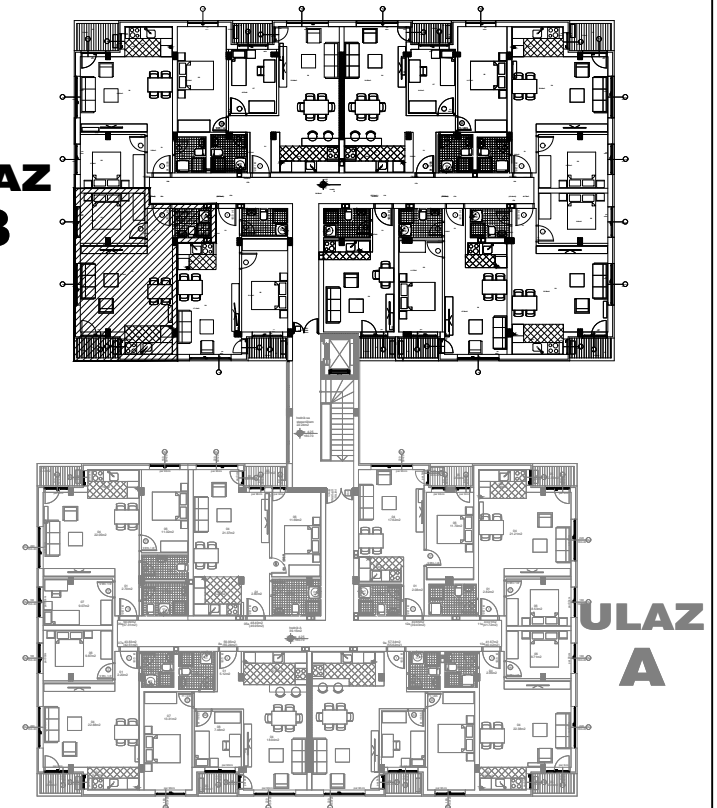


**STAN 9b DVOSOBAN**

<b>1</b>	<b>ULAZNI HODNIK</b>	2.67m <sup>2</sup>
<b>2</b>	<b>KUHINJA</b>	3.89m <sup>2</sup>
<b>3</b>	<b>KUPATILO</b>	3.04m <sup>2</sup>
<b>4</b>	<b>DNEVNA SOBA</b>	21.73m <sup>2</sup>
<b>5</b>	<b>TERASA</b>	2.33m <sup>2</sup>
<b>6</b>	<b>SPAVAĆA SOBA</b>	9.13m <sup>2</sup>
<b>UKUPNO STAN 9b :</b>		42.79m <sup>2</sup>
		<b>- 3% (41.51m<sup>2</sup>)</b>

**OSNOVA I SPRATA**

**ULAZ B**



**ULAZ A**



**ulica Ćirila i Metodija br.50-52-54**

**ULAZ B: I SPRAT/STAN 9b**