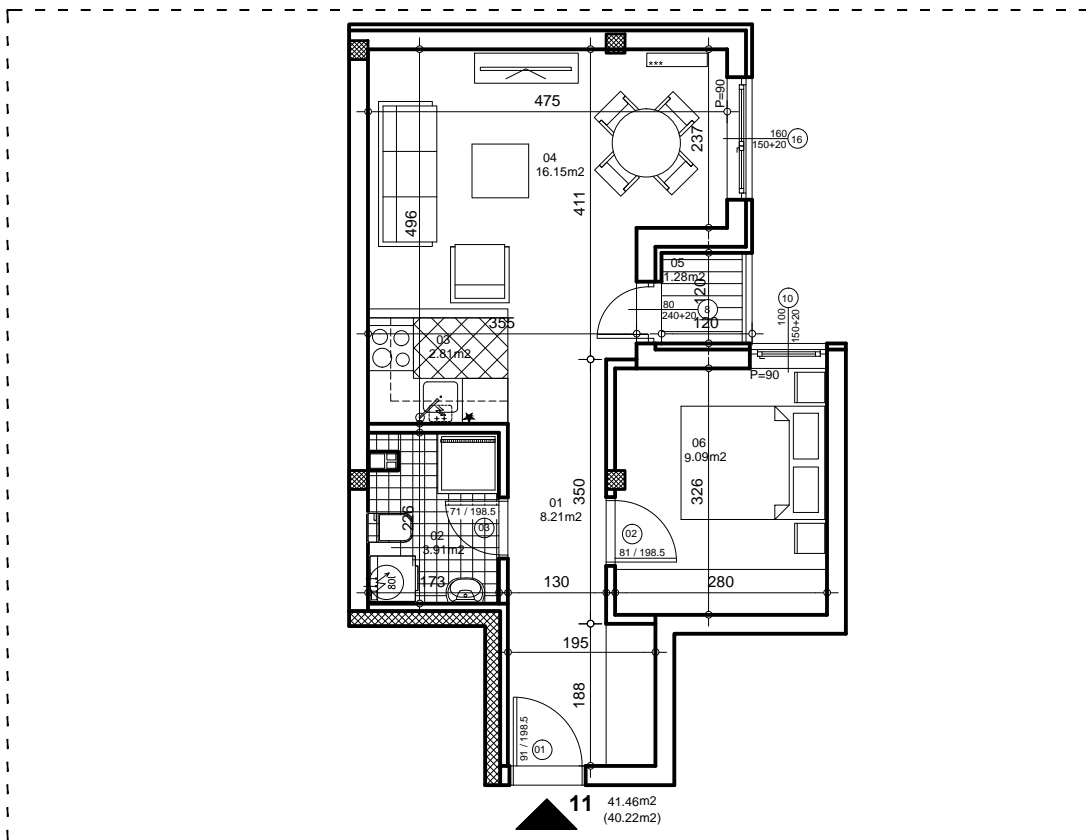




osnova stana
R = 1:100

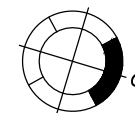


ulica Ćirila i Metodija br.48

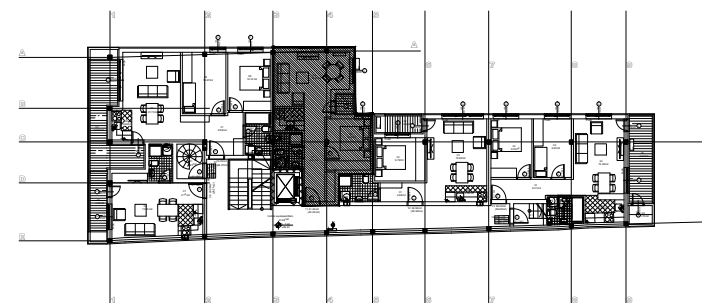
STAN 11 DVOSOBAN

1	ULAZNI HODNIK	8.21m ²
2	KUPATILO	3.91m ²
3	KUHINJA	2.81m ²
4	DNEVNI BORAVAK	16.15m ²
5	TERASA	1.28m ²
6	SPAVAĆA SOBA	9.09m ²
UKUPNO STAN 11 :		41.46m ²
		- 3% (40.22m²)

OSNOVA POTKROVLJA



ulica Ćirila i Metodija



POTKROVLJE/STAN 11